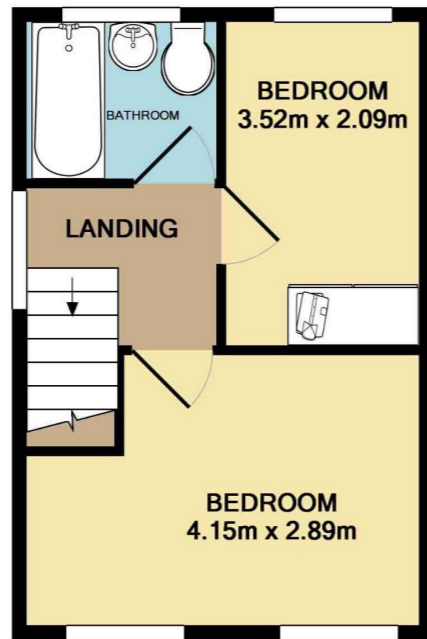
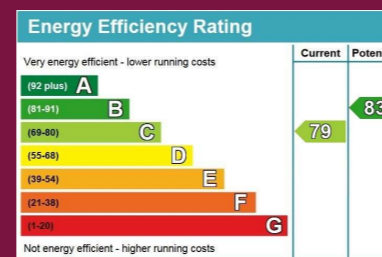
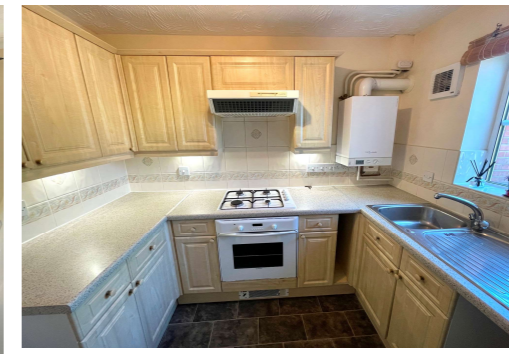


GROUND FLOOR
APPROX. FLOOR
AREA 26.2 SQ.M.
(282 SQ.FT.)



1ST FLOOR
APPROX. FLOOR
AREA 26.2 SQ.M.
(282 SQ.FT.)

TOTAL APPROX. FLOOR AREA 52.4 SQ.M. (564 SQ.FT.)
Measurements are approximate. Not to scale. Illustrative purposes only
Made with Metropix ©2014



**12 Bonnewe Rise, Amesbury
Salisbury, Wiltshire SP4 7UG**

£275,000 Freehold

We are pleased to offer to market this two bedroom Mid-terrace house set in a popular location in Amesbury. The accommodation comprises; entrance hallway, downstairs cloakroom, modern kitchen, lounge / dining room with doors leading onto an enclosed rear garden. On the first floor the house offers; two bedrooms and a bathroom. Other benefits include; gas central heating, allocated parking, gardens to the front and rear. The property is being sold with no chain, call us now to arrange a viewing.

IMPORTANT: We would like to inform prospective purchasers that these sales particulars have been prepared as a general guide only. A detailed survey has not been carried out, nor the services, appliances and fittings tested. Room sizes should not be relied upon for furnishing purposes and are approximate. If floorplans are included they are for guidance and illustration purposes only and may not be to scale. If there are any important matters likely to affect your decision to buy, please contact us before viewing the property.





Overview

- TWO BEDROOM MID TERRACE HOUSE
- POPULAR LOCATION
- DOWNSTAIRS CLOAKROOM
- LOUNGE / DINING ROOM LEADING ONTO THE REAR GARDEN
- ALLOCATED PARKING
- SOLD WITH NO FORWARD CHAIN
- VIEWING ESSENTIAL
- CALL NOW TO VIEW

Entrance Hallway

Downstairs Cloakroom

Kitchen 2.53m x 2.17m

Lounge / Dining Room 4.15m x 3.78m

Bedroom One 4.15m x 2.89m

Bedroom Two 3.52m x 2.09m

Bathroom

Front and Rear Gardens

Allocated Parking

Council Tax Band – C

Agents Note- Draft Copy of particulars

Disclaimer

These particulars are believed to be correct and have been verified by or on behalf of the Vendor. However any interested party will satisfy themselves as to their accuracy and as to any other matter regarding the Property or its location or proximity to other features or facilities which is of specific importance to them. Distances and areas are only approximate and unless otherwise stated fixtures contents and fittings are not included in the sale. Prospective purchasers are always advised to commission a full inspection and structural survey of the Property before deciding to proceed with a purchase.